

**BOLT EV 2017**

**CHEVROLET**





**GO ANYWHERE,  
EXCEPT THE GAS STATION.**

Introducing the all-new Chevrolet Bolt EV, the 2017 *Motor Trend* Car of the Year.<sup>®</sup> The first affordable electric vehicle with a 238-mile range on a full charge,<sup>1</sup> it can take you just about anywhere, except the gas station. The perfect combination of range, utility and style, Bolt EV is revolutionizing the way we drive and the way we think about electric cars.

Immerse yourself more fully in Bolt EV by using the icons placed throughout this catalog to reveal additional interactive content. It's a new experience well worth exploring.

---

VISIT [MEETBOLTEV.COM](http://MEETBOLTEV.COM) TO BEGIN  
THE BOLT EV INTERACTIVE EXPERIENCE.

---

2017  
**MOTORTREND**  
CAR OF THE YEAR<sup>®</sup>



Bolt EV Premier in Arctic Blue Metallic  
with available features.

<sup>1</sup>EPA-estimated 238-mile EV range. Your actual range may vary based on several factors, including temperature, terrain, and driving technique.

**FIND NEW ROADS™**



**RANGE**

*“Chevrolet’s all-new 2017 Bolt EV is a breakthrough vehicle in every sense.”*

*— Green Car Journal*



<sup>1</sup> Visit [GreenCarJournal.com](http://GreenCarJournal.com) for more information. <sup>2</sup> EPA-estimated 238-mile EV range. Your actual range may vary based on several factors, including temperature, terrain, and driving technique.

Bolt EV Premier in Arctic Blue Metallic with available features.

**GO GREEN WHILE GOING THE DISTANCE.**

Named the *Green Car Journal's* 2017 Green Car of the Year,<sup>1</sup> Bolt EV offers an EPA-estimated 238 miles of range on a full charge<sup>2</sup> – which is more than five times the amount needed for the average daily commute of 40 miles. You could go days without having to charge your battery.

**LOCATION-BASED CHARGING.** Bolt EV makes charging efficient with home and away settings for recharging. You can delay charging to take advantage of off-peak electricity rates when you're at home and begin charging immediately when you're away.

**CHOOSE YOUR CHARGE.** When it comes to charging, Bolt EV is centered around your driving needs. Choose from DC Fast Charging for vehicles so equipped, the available AeroVironment® 240-volt charging unit (professional installation required), or a conventional 120-volt outlet. With the award-winning Bolt EV, you've got options.



**1. CHARGE FASTER.** For equipped vehicles, DC Fast Charging is available at conveniently located public charging stations and provides up to 90 miles of range in about 30 minutes of charge!



**2. EXPLORE YOUR OPTIONS.** Charging your Bolt EV is as easy as plugging in your cell phone with the available AeroVironment® 240-volt charging unit (professional installation required). This charging unit provides more power and will charge your Bolt EV faster than a 120-volt outlet.



**3. KNOW WHERE YOU STAND.** Bolt EV makes it easy to monitor range. The Energy History screen provides at-a-glance, real-time information. And an Energy Usage Score lets you see patterns in your daily commute and how driving style, terrain and temperature affect range.

<sup>1</sup> Actual time may vary with charge level and outside temperature.



USE THIS ICON TO ACCESS CONTENT  
VISIT MEETBOLTEV.COM ON YOUR MOBILE DEVICE



## PERFORMANCE

Bolt EV Premier in Silver Ice Metallic with available features.

**238**  
EPA-ESTIMATED  
MILES OF RANGE ON  
A SINGLE CHARGE<sup>1</sup>

**6.5**  
SECONDS  
0 TO 60 MPH<sup>2</sup>

**266**  
LB.-FT. OF TORQUE



<sup>1</sup> EPA-estimated 238-mile EV range. Your actual range may vary based on several factors, including temperature, terrain, and driving technique. <sup>2</sup> Based on initial vehicle movement.

Bolt EV is an electric vehicle that's fun to drive. It's also engineered to maximize energy and efficiency with features like One Pedal Driving and Regen on Demand,<sup>™</sup> for smooth handling and plenty of passing power.

**EFFICIENT, EVERYWHERE.** One Pedal Driving helps you get anywhere you want to go more efficiently. When driving in Low mode at any speed, One Pedal Driving lets you speed up and slow down by using only the accelerator pedal.

When you want to speed up, press your foot down like you normally would. And when you want to slow down, just lift your foot off the accelerator. This means you rarely have to touch the brake pedal. So instead of losing energy when slowing down, One Pedal Driving helps you capture energy and sends it back to the battery.

**OPTIMIZE RANGE.** Regen on Demand allows you to convert energy into electricity and transfers it back to

the battery. A simple pull and hold of the Regen on Demand paddle on your steering wheel will decelerate your vehicle. Of course, you must use your brake pedal if you need to stop immediately.

**PRECISE CONTROL.** The Electronic Precision Shift offers smooth and responsive shifting – and the latest in technology. Bolt EV is the first Chevrolet vehicle to have a shifter that sends electronic signals to the drive unit to

select Reverse, Neutral, Park, Drive and Low. The sleek joystick shifter offers a seamless and effortless experience. And because it eliminates the need for bulky hardware, the center console area is freed up to provide additional room and a greater sense of personal space.



USE THIS ICON TO ACCESS CONTENT  
VISIT MEETBOLTEV.COM ON YOUR MOBILE DEVICE



*DESIGN*

**A CAR AND DRIVER  
"2017 10BEST" AWARD WINNER.**

**Bolt EV Premier in Arctic Blue Metallic  
with available features.**





**1. ROOM TO MOVE.** Designed from the inside out to provide usable space, Bolt EV gives you plenty of room for five passengers and all your gear. Rear seats fold down for 56.6 cubic feet of cargo space,<sup>1</sup> which allows easy loading of large or odd-sized items. The battery placed beneath the floor enables a flat storage surface and a very spacious front compartment. It also facilitates easy entry and exit. The rear cargo area features a deep well with an available false cargo floor for additional storage space.



**2. DESIGNED TO PERFORM.** Michelin® Energy™ Saver All-Season tires with Selfseal® technology offer low rolling resistance and are designed to self-seal in the event of a minor tread puncture such as a nail. The specially engineered 17-inch wheels provide enhanced stiffness to help manage noise and vibration.

**3. BREAK FROM TRADITION.** A sculpted exterior takes a fresh approach to proportions and also to details such as the lamps and grille.

<sup>1</sup> Cargo and load capacity limited by weight and distribution.





## TECHNOLOGY

Bolt EV Premier interior in Dark Galvanized Gray/Sky Cool Gray with perforated leather-appointed seats.

<sup>1</sup> Full functionality requires compatible Bluetooth and smartphone, and USB connectivity for some devices. <sup>2</sup> Vehicle user interface is a product of Apple and its terms and privacy statements apply. Requires compatible iPhone and data plan rates apply. <sup>3</sup> Data plan rates apply. <sup>4</sup> Vehicle user interface is a product of Google and its terms and privacy statements apply. Requires the Android Auto app on Google Play and an Android compatible smartphone running Android 5.0 Lollipop or higher. Data plan rates apply. <sup>5</sup> Requires a compatible mobile device, active OnStar service and data plan. 4G LTE service available in select markets. Visit [onstar.com](http://onstar.com) for coverage map, details and system limitations. Data plans provided by AT&T.

Apple CarPlay is a trademark of Apple Inc. iPhone is a trademark of Apple Inc., registered in the U.S. and other countries. Android, Android Auto, Google and Google Play are trademarks of Google Inc.

Smart technology helps Bolt EV make every ride a connected one. Important information such as your battery levels, range estimation, charge settings and climate controls is readily available on the standard 10.2-inch diagonal Chevrolet MyLink<sup>1</sup> center display screen and 8-inch diagonal driver cluster.

### **Apple CarPlay™ COMPATIBILITY<sup>2</sup>**

Take some of your favorite compatible iPhone® features and put them on your vehicle's touch-screen display in a smart, simple manner. Access your Phone, Music, Maps and Messages, as well as some of your other favorite apps (e.g., iHeartRadio<sup>3</sup> and Pandora® Internet Radio<sup>3</sup>).

### **ANDROID AUTO COMPATIBILITY<sup>4</sup>**

You can quickly and intuitively interact with select smartphone apps with support for Android Auto™<sup>4</sup>. This system takes some of your compatible Android phone's features and puts them on the Chevrolet MyLink<sup>1</sup> display. You can access your phone, text messages, music, navigation and more.

**Wi-Fi IN YOUR BOLT EV.** Chevrolet offers a built-in Wi-Fi® hotspot<sup>5</sup>, providing a more powerful connection than a smartphone or mobile hotspot<sup>5</sup>, with bandwidth for up to seven devices.





**1. myChevrolet Mobile App!** Turn your compatible mobile device into a command center for your Bolt EV. Create a completely connected experience between your vehicle and your smartphone. Remotely start your vehicle, lock the doors, even warm up your vehicle while it's charging – all with the tap of a finger.



**2. ENERGY USAGE SCREEN.** This screen breaks down the percentage of energy used for driving, climate control and battery conditioning. See how much energy you're using when adjusting heat or air conditioning settings to control your comfort level.



**3. RANGE ANALYSIS.** A Confidence Gauge in the configurable Driver Information Center provides best-case and worst-case scenarios based on recent driving conditions. It analyzes how you trend on efficiency based on real-life driving information.


<sup>1</sup> Requires active OnStar service, compatible device, factory-installed remote start and power locks. Data rates apply. Visit [onstar.com](http://onstar.com) for details and system limitations.



USE THIS ICON TO ACCESS CONTENT  
VISIT [MEETBOLTEV.COM](http://MEETBOLTEV.COM) ON YOUR MOBILE DEVICE



## SAFETY



**SAFETY STARTS WITH YOU.** Safety features are no substitute for the driver's responsibility to operate the vehicle in a safe manner. The driver should remain attentive to traffic, surroundings and road conditions at all times. Read the vehicle Owner's Manual for important feature limitations and information.



# ADVANCED SAFETY TECHNOLOGY HELPS COVER ALL THE ANGLES.



## **LOW SPEED FORWARD AUTOMATIC BRAKING.**

Available on Bolt EV, camera-based Low Speed Forward Automatic Braking helps mitigate collisions with detected vehicles. The system may even help avoid a collision at very low speeds. The system works at speeds below 50 mph.



**FORWARD COLLISION ALERT.** This available feature continually monitors how close your vehicle is to the vehicle in front of you. If the system determines that a front-end collision with a detected vehicle is imminent, it alerts the driver to a potential crash. It also warns the driver if their Bolt EV is following a detected vehicle much too closely.



**LANE KEEP ASSIST.** At speeds above 37 mph, the available camera-based system monitors road lines and will gently turn the steering wheel if the vehicle begins changing lanes without the use of a turn signal.



**SIDE BLIND ZONE ALERT.** With radar sensors on both sides of the vehicle, available Side Blind Zone Alert helps to warn you when vehicles are in your side mirror blind zones and indicates their presence with LED-lit symbols in the exterior mirrors.



**LANE CHANGE ALERT.** Working with available Side Blind Zone Alert, available Lane Change Alert employs radar sensors in the rear corners of the vehicle to help detect and warn the driver of fast-approaching vehicles in the adjacent lanes from up to 82 feet away, not just in the side view mirror blind zones.



**REAR CROSS TRAFFIC ALERT.** Using radar sensors, available Rear Cross Traffic Alert helps warn drivers of approaching traffic when backing up. If an approaching vehicle is detected, the driver is warned with visual and audible alerts.



**REAR VISION CAMERA.** Standard on Bolt EV, the rear vision camera displays a view of the area immediately behind the vehicle on the 10.2-inch diagonal color touch-screen – making it easier to see what's behind you while backing up.



**REAR PARK ASSIST.** This available feature helps you back up by sounding an audible alert and providing visual indication on the rear vision camera display when it detects certain stationary objects in close proximity behind the vehicle.



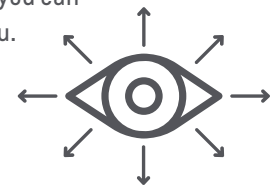
**INTELLIBEAM HEADLAMPS.** When oncoming headlamps are sensed or when taillamps are detected in front of you, the available IntelliBeam® high beam assist intuitively adjusts between low and high beams.



**SURROUND VISION.** This new available feature makes parallel parking and maneuvering at low speeds into tight garage spaces so much easier. Using four strategically placed cameras, Surround Vision gives you a bird's-eye view of the area immediately surrounding your Bolt EV on the available 10.2-inch diagonal color touch-screen display, allowing you to see the areas behind and around you. You'll get the full view with just one look.



**REAR CAMERA MIRROR.** The available Rear Camera Mirror technology projects a wide-angle view of the area behind your Bolt EV with the easy flip of a switch on your rearview mirror. The mirror surface doubles as a video screen and provides the driver with a full, high-resolution view without the obstruction of head restraints, rear-seat passengers or cargo, so you can see more of the approaching traffic behind you.





## COLORS



SUMMIT WHITE  
(With Black Grille)



SILVER ICE METALLIC<sup>1,2</sup>  
(With Black Grille)



NIGHTFALL GRAY METALLIC  
(With Black Grille)



CAJUN RED TINTCOAT<sup>3</sup>  
(With Black Grille)



ORANGE BURST METALLIC<sup>3</sup>  
(With Dark Silver Grille)



ARCTIC BLUE METALLIC<sup>4</sup>  
(With Black Grille)



KINETIC BLUE METALLIC<sup>3</sup>  
(With Black Grille)



MOSAIC BLACK METALLIC  
(With Dark Silver Grille)

## FABRICS



Dark Galvanized Gray/Sky Cool Gray Deluxe Cloth<sup>5</sup>



Light Ash Gray/Ceramic White Perforated Leather Appointments<sup>6</sup>



Dark Galvanized Gray/Sky Cool Gray Perforated Leather Appointments<sup>6</sup>



Dark Galvanized Gray Perforated Leather Appointments<sup>6</sup>

## WHEELS



17" Painted-Aluminum  
(Standard on LT)



17" Ultra Bright Machined-Aluminum  
with Painted Pockets  
(Standard on Premier)

<sup>1</sup> Requires Dark Galvanized Gray or Light Ash Gray/Ceramic White interior. <sup>2</sup> Premier models only. <sup>3</sup> Extra-cost color. <sup>4</sup> Requires Dark Galvanized Gray or Dark Galvanized Gray/Sky Cool Gray interior. <sup>5</sup> Standard on LT. <sup>6</sup> Standard on Premier.

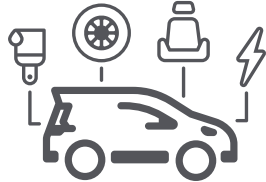




Bolt EV Premier in Arctic Blue Metallic with available features.

***CUSTOMIZE YOUR BOLT EV.***

Visit [MeetBoltEV.com](https://www.meetboltev.com) and take a picture of the icon below to create your own Bolt EV. Select an exterior color and create a video of your vehicle you can save and share.



USE THIS ICON TO ACCESS CONTENT  
VISIT [MEETBOLTEV.COM](https://www.meetboltev.com) ON YOUR MOBILE DEVICE



## SPECIFICATIONS

● STANDARD ○ AVAILABLE – NOT AVAILABLE

	LT	PREMIER
<b>EXTERIOR</b>		
Antenna: Roof-mounted shark fin	●	●
Door handles: Body-color	●	–
Body-color with chrome strip	–	●
Daytime Running Lamps with LED signature	●	●
Headlamps: High-intensity discharge, low and high beam projector, automatic on and off	●	●
IntelliBeam automatic high beam assist	–	○ <sup>1</sup>
LED center high-mounted stop lamp and taillamps	●	●
Luggage rack: Side rails, roof-mounted	–	●
Mirrors: Heated, power-adjustable, black, manual-folding	●	–
Heated, power-adjustable, black, manual-folding with integrated turn signal indicators	–	●
Wipers: Front intermittent, variable, with washers; rear intermittent with washer	●	●
<b>PROPULSION/CHASSIS</b>		
Electric drive unit: 200 hp (150 kW) of motoring power, 266 lb.-ft. (360 N·m) of motoring torque	●	●
Battery: Propulsion, 60 kWh lithium-ion Rechargeable Energy Storage System	●	●
Battery: 12-volt with rundown protection	●	●
Brakes: 4-wheel antilock, 4-wheel disc	●	●
Regen on Demand: Driver-initiated regenerative braking, steering wheel-mounted paddle	●	●
Electronic parking brake	●	●
Charge cord: 120-volt, portable	●	●
Onboard charger: 7.2 kW high-voltage	●	●
DC Fast Charging capability	○	○
Charge control: Location-based, selectable GPS-enabled with programmable “home” charging setting and programmable time of day with charging status indicator light on instrument panel	●	●
Electronic Precision Shift: Electronic transmission range selector, leather-trimmed	●	●
Suspension: Performance Ride and Handling; independent front, semi-independent rear with compound crank	●	●

	LT	PREMIER
<b>SAFETY &amp; SECURITY</b>		
Air bags: <sup>2</sup> Driver and front passenger dual-stage frontal, includes Passenger Sensing System; head-curtain side-impact and thorax side-impact seat-mounted for front and rear outboard seating positions; driver and front passenger knee	●	●
LATCH (Lower Anchors and Tethers for Children) system for child safety seats	●	●
OnStar Guidance Plan <sup>3</sup> for 3 months, including Automatic Crash Response, Stolen Vehicle Assistance, Roadside Assistance, Turn-by-Turn Navigation, Advanced Diagnostics and more (trial excludes Hands-Free Calling minutes)	●	●
Rear Camera Mirror with full camera display	–	●
Rear Vision Camera	●	–
Surround Vision: Bird's-eye view, includes rear vision camera	–	●
Safety belts: 3-point, driver and front passenger, with pretensioners and load limiters	●	●
Teen Driver technology	●	●
Tire Pressure Monitoring System	●	●
StabiliTrak <sup>®</sup> Electronic Stability Control System with Traction Control	●	●
Side Blind Zone Alert with Lane Change Alert	○ <sup>4</sup>	●
Rear Cross Traffic Alert	○ <sup>4</sup>	●
Rear Park Assist	○ <sup>4</sup>	●
Forward Collision Alert with Following Distance Indicator	–	○ <sup>1</sup>
Lane Keep Assist with Lane Departure Warning	–	○ <sup>1</sup>
Low Speed Forward Automatic Braking and Front Pedestrian Braking	–	○ <sup>1</sup>

	LT	PREMIER
<b>INTERIOR</b>		
Air conditioning: Single-zone automatic climate control	●	●
Cabin air filter	●	●
Cargo area: Cargo cover	●	●
False cargo floor storage area	○	●
Center rear armrest	–	●
Console with sliding armrest and covered storage	●	●
Cup holders: 2 front and 2 rear	●	●
Door locks: Power-programmable with lockout protection and rear door child security	●	●
Driver Information Center: 8-inch diagonal enhanced multi-color configurable graphic display with 3 themes and energy-use monitors	●	●
Floor mats: Carpeted front and rear	●	●
Heat ducts: Rear	●	●
Keyless Open and Start: Passive unlock and lock on all doors and liftgate; push-button start	●	●
Lighting: Interior ambient lighting, front reading lamps, dome lamp and cargo area lamp	●	●
Ambient instrument panel lighting	–	●
Mirror: Rearview, manual day/night	●	–
Rearview auto-dimming	○ <sup>5</sup>	–
Rearview auto-dimming Rear Camera Mirror with full camera display	–	●
Power outlet: Auxiliary 12-volt, located in front storage bin	●	●
Remote Keyless Entry with remote start, door and liftgate lock/unlock functions, and panic button	●	●
Steering wheel: 3-spoke tilt and telescoping with steering wheel-mounted controls for audio, phone and cruise control	●	●
Heated, leather-wrapped	○ <sup>5</sup>	●
Windows: Power with driver express-up/-down; front and rear passenger express-down	●	●
Wireless charging for devices <sup>6</sup>	–	○ <sup>7</sup>

<sup>1</sup> Requires available Driver Confidence II Package. <sup>2</sup> A NOTE ON CHILD SAFETY: Always use safety belts and the correct child restraint for your child's age and size, even with air bags. Even in vehicles equipped with the Passenger Sensing System, children are safer when properly secured in a rear seat in the appropriate infant, child or booster seat. Never place a rear-facing infant restraint in the front seat of any vehicle equipped with an active frontal air bag. See the Owner's Manual and the child safety seat instructions for more safety information. <sup>3</sup> Visit [onstar.com](http://onstar.com) for coverage map, details and system limitations. OnStar acts as a link to existing emergency service providers. <sup>4</sup> Requires available Driver Confidence Package. <sup>5</sup> Requires available Comfort and Convenience Package. <sup>6</sup> The system wirelessly charges one PMA- or Qi-compatible mobile device. Some devices require an adaptor or back cover. To check for phone or other device compatibility, visit [my.chevrolet.com/learn](http://my.chevrolet.com/learn) for details. <sup>7</sup> Requires available Infotainment Package.

## SPECIFICATIONS

● STANDARD ○ AVAILABLE – NOT AVAILABLE

	LT	PREMIER
<b>SEATING</b>		
Front bucket seats with 6-way manual seat adjusters and adjustable head restraints	●	●
Rear 60/40 split-folding seat with articulating head restraints for outboard seats	●	●
Seating: Deluxe Cloth	●	–
Perforated leather-appointed	–	●
Heated seats: Driver and front passenger	○ <sup>1</sup>	●
Rear outboard	–	●
<b>ENTERTAINMENT</b>		
Chevrolet MyLink <sup>2</sup> Radio: 10.2-inch diagonal LCD color touch-screen, AM/FM stereo with seek-scan and digital clock, Bluetooth <sup>®</sup> audio streaming, <sup>3</sup> voice-activated technology for radio and phone, and Apple CarPlay <sup>™4</sup> and Android Auto <sup>™5</sup> capability for compatible phones	●	●
6-speaker audio system	●	●
Bose <sup>®</sup> premium 7-speaker audio system including subwoofer	–	○ <sup>6</sup>
2 USB ports <sup>7</sup> and auxiliary input jack, located in front center console	●	●
2 USB ports, charge only, located on rear of center console	–	○ <sup>6</sup>
SiriusXM Satellite Radio All Access Package with 3-month trial subscription <sup>8</sup>	●	●
OnStar 4G LTE and built-in Wi-Fi <sup>®</sup> hotspot <sup>9</sup> for up to seven devices, includes data trial for 3 months or 3 GB (whichever comes first)	●	●
OnStar Basic Plan <sup>10</sup> for five years includes select features of the myChevrolet Mobile App <sup>11</sup> including remote start, door lock or unlock, and honk your horn and flash your lights. Limited OnStar services include Advanced Diagnostics and Dealer Maintenance Notification	●	●

	LT	PREMIER
<b>WHEELS</b>		
17" painted-aluminum	●	–
17" Ultra Bright machined-aluminum with painted pockets	–	●
<b>PACKAGES</b>		
Comfort and Convenience Package: Heated driver and front passenger seats, 3-spoke leather-wrapped heated steering wheel and auto-dimming inside rearview mirror	○	●
Driver Confidence Package: Side Blind Zone Alert with Lane Change Alert, Rear Cross Traffic Alert and Rear Park Assist	○ <sup>1</sup>	●
Driver Confidence II Package: Low Speed Forward Automatic Braking, Lane Keep Assist with Lane Departure Warning, Forward Collision Alert, Following Distance Indicator, Front Pedestrian Braking and IntelliBeam automatic high beam assist	–	○ <sup>6</sup>
Infotainment Package: Bose premium 7-speaker audio system, wireless charging for devices <sup>12</sup> and 2 charge-only USB ports <sup>7</sup> for rear passengers	–	○

<sup>1</sup> Requires available Comfort and Convenience Package. <sup>2</sup> MyLink functionality varies by model. Full functionality requires compatible Bluetooth and smartphone, and USB connectivity for some devices. <sup>3</sup> Visit [my.chevrolet.com/learn](http://my.chevrolet.com/learn) for vehicle and smartphone compatibility. <sup>4</sup> Vehicle user interface is a product of Apple and its terms and privacy statements apply. Requires compatible iPhone and data plan rates apply. <sup>5</sup> Vehicle user interface is a product of Google and its terms and privacy statements apply. Requires the Android Auto app on Google Play and an Android compatible smartphone running Android 5.0 Lollipop or higher. Data plan rates apply. <sup>6</sup> Requires available Infotainment Package. <sup>7</sup> Not compatible with all devices. <sup>8</sup> If you decide to continue service after your trial, the subscription plan you choose will automatically renew thereafter and you will be charged according to your chosen payment method at then-current rates. Fees and taxes apply. To cancel you must call SiriusXM at 1-866-635-2349. See SiriusXM Customer Agreement for complete terms at [siriusxm.com](http://siriusxm.com). All fees and programming subject to change. <sup>9</sup> Requires a compatible mobile device, active OnStar service and data plan. 4G LTE service available in select markets. Visit [onstar.com](http://onstar.com) for coverage map, details and system limitations. Data plans provided by AT&T. <sup>10</sup> Does not include emergency or security services. Visit [onstar.com](http://onstar.com) for coverage map, details and system limitations. <sup>11</sup> Requires active OnStar service, compatible device, factory-installed remote start and power locks. Data rates apply. Visit [onstar.com](http://onstar.com) for details and system limitations. <sup>12</sup> The system wirelessly charges one PMA- or Qi-compatible mobile device. Some devices require an adaptor or back cover. To check for phone or other device compatibility, visit [my.chevrolet.com/learn](http://my.chevrolet.com/learn) for details.





Experience Chevrolet Complete Care, a comprehensive coverage, warranty and protection program that comes standard with every new 2017 Chevrolet Bolt EV lease and purchase. Simply, it is designed around you, to make it easy to keep your Chevrolet like new – and give you the confidence you deserve when you need it most.

#### YOUR COMPREHENSIVE OWNER BENEFIT PROGRAM.

Includes two maintenance visits (tire rotations and multipoint vehicle inspections) <sup>1</sup>
8-year/100,000-mile Battery and Specific Electric Drive Component Limited Warranty and Courtesy Transportation <sup>2</sup>
5 years/60,000 miles of Roadside Assistance <sup>2</sup>
5-year/60,000-mile Powertrain Limited Warranty <sup>2</sup>
3-year/36,000-mile Bumper-to-Bumper Warranty <sup>2</sup>
6 years/100,000 miles of Rust-Through Protection <sup>2</sup>
5 years of OnStar Basic Plan <sup>3</sup> including select features of the myChevrolet Mobile App <sup>4</sup>
3 months of OnStar Guidance Plan <sup>5</sup>

### DIMENSIONS

Width	69.5"
Front Track	59.1"
Rear Track	59.1"

Length	164"
Wheelbase	102.4"
Height	63"

### CHARGING



Enjoy one-stop shopping for both your Bolt EV and Level 2 charging equipment. The Chevrolet recommended home charging provider, AeroVironment,<sup>®</sup> offers Bolt EV owners proven, reliable and compatible charging equipment with convenient financing options at participating Chevrolet dealers. For information on installation services, visit [aerovironment.com](http://aerovironment.com) or call 1-888-833-2148 to speak with a customer service associate.

Available 240-volt charging station.

### MAXIMUM CAPACITIES

#### EPA-ESTIMATED FUEL ECONOMY

EV Range	238 miles <sup>6</sup>
Combined	119 MPGe
<b>BATTERY</b>	60 kWh
<b>PASSENGER VOLUME</b>	94.4 cubic feet/seats 5
<b>MAX CARGO VOLUME<sup>7</sup></b>	56.6 cubic feet

### OWNERSHIP EXTRAS

CHEVROLET  [CHEVROLET.COM/WARRANTY](http://CHEVROLET.COM/WARRANTY)

CHEVROLET  [CHEVROLET.COM/ACCESSORIES](http://CHEVROLET.COM/ACCESSORIES)

 [ONSTAR.COM](http://ONSTAR.COM)

 [SIRIUSXM.COM](http://SIRIUSXM.COM)

### NEW VEHICLE LIMITED WARRANTY

**5-YEAR/60,000-MILE TRANSFERABLE POWERTRAIN LIMITED WARRANTY** Every 2017 Chevrolet Bolt EV comes with a 5-year/60,000-mile (whichever comes first) transferable Powertrain Limited Warranty. Plus, you get 5 years/60,000 miles (whichever comes first) of the 24/7 Roadside Assistance Program and 8 years/100,000 miles of the Courtesy Transportation Program, and much more. See dealer for details.

**NEW VEHICLE LIMITED WARRANTY** GM vehicles registered in the USA are covered for 3 years/36,000 miles (whichever comes first). The complete vehicle is covered, including tires, towing to your nearest Chevrolet dealership and cosmetic corrosion resulting from defects. Repairs will be made to correct any vehicle defect, and most warranty repairs will be made at no charge. In addition, rust-through corrosion will be covered for 6 years/100,000 miles (whichever comes first). See dealer for details.

**BATTERY LIMITED WARRANTY** Bolt EV battery and specific electric drive components are covered for 8 years/100,000 miles (whichever comes first). The Bolt EV battery warranty covers battery components in addition to the thermal management system, charging system and electric drive components. See dealer for details.

<sup>1</sup> Maintenance visits must occur within two years or 24,000 miles of vehicle delivery, whichever comes first. Does not include air filters. See participating dealer for other restrictions and complete details. <sup>2</sup> Whichever comes first. See dealer for details. <sup>3</sup> Does not include emergency or security services. Visit [onstar.com](http://onstar.com) for coverage map, details and system limitations. <sup>4</sup> Requires data plan, compatible vehicle and compatible device. Some features require factory-installed remote start, power locks, Tire Pressure Monitoring System or active OnStar service. <sup>5</sup> Visit [onstar.com](http://onstar.com) for coverage map, details and system limitations. <sup>6</sup> EPA-estimated 238-mile EV range. Your actual range may vary based on several factors, including temperature, terrain, and driving technique. <sup>7</sup> Cargo and load capacity limited by weight and distribution.

## IMPORTANT INFORMATION

**CHEVROLET OWNER CENTER (MY.CHEVROLET.COM)** Everything you need to know. Anything you need to do. Your Chevrolet Owner Center makes it easy. Create your account today to get the most out of your new vehicle. Get special alerts and offers, schedule service, review your maintenance schedule, and view how-to videos specifically for your vehicle. All online, anytime. Visit the Owner Center today to register or take a tour.

**ASSEMBLY** Chevrolet vehicles and their components are assembled or produced by different operating units of General Motors, its subsidiaries or suppliers to GM worldwide. We sometimes find it necessary to produce Chevrolet vehicles with different or differently sourced components than originally scheduled. Since some options may be unavailable when your vehicle is assembled, we suggest you verify that your vehicle includes the equipment you ordered and that, if there were changes, they are acceptable to you.

**ONSTAR** OnStar services require vehicle electrical system (including battery), wireless service and GPS satellite signals to be available and operating for features to function properly. OnStar acts as a link to existing emergency service providers. Subscription Service Agreement required. Call 1.888.4ONSTAR (1-888-466-7827) or visit [onstar.com](http://onstar.com) for OnStar Terms and Conditions, Privacy Policy, details and system limitations.

**A NOTE ON CHILD SAFETY** Always use safety belts and the correct child restraint for your child's age and size, even with air bags. Even in vehicles equipped with the Passenger Sensing System, children are safer when properly secured in a rear seat in the appropriate infant, child or booster seat. Never place a rear-facing infant restraint in the front seat of any vehicle equipped with an active frontal air bag. See the Owner's Manual and the child safety seat instructions for more safety information.

**IMPORTANT WORDS ABOUT THIS CATALOG** We have tried to make this catalog comprehensive and factual. We reserve the right, however, to make changes at any time, without notice, in prices, colors, materials, equipment, specifications, models and availability. Specifications, dimensions, measurements, ratings and other numbers in this catalog and other printed materials provided at the dealership or affixed to vehicles are approximations based on design and engineering drawings, prototypes and laboratory tests. Your vehicle may differ due to variations in manufacture and equipment. Since some information may have been updated since the time of printing, please check with your Chevrolet dealer for complete details. Chevrolet reserves the right to lengthen or shorten the

model year for any product for any reason or to start and end model years at different times. Certain vehicle features may lose their usefulness over time due to obsolescence from technological changes. Unless otherwise noted, all claims based on GM Small Car segment and latest available competitive information. Excludes other GM vehicles.

**SPARE TIRE INFORMATION** There is no standard jack or spare tire in the 2017 Chevrolet Bolt EV. Your vehicle may have a tire sealant and compressor kit that uses a liquid tire sealant to temporarily seal up to a one-quarter-inch puncture in the tread area of the tire. After using the tire inflator kit, it is recommended that you take the tire to an authorized retailer for inspection and repair as soon as possible, but at least within 100 miles of driving. The tire sealant cannot seal and inflate sidewall damage, punctures larger than one-quarter inch, or a tire that has unseated from the wheel. The sealant can only be used on one tire and for one time before its expiration date.

**CHEVROLET OWNERSHIP EXPERIENCE** Chevrolet is committed to enhancing the vehicle shopping and ownership experience through a wide array of programs. Visit [chevrolet.com](http://chevrolet.com) to build and price, find a vehicle, request a quote, compare vehicles, find financial tools or track your vehicle order. You'll also find information about 24-hour Roadside Assistance, Courtesy Transportation, Customer Assistance, GM Mobility, safety and current incentives.

**CHEVROLET.COM/SAFETY** Chevrolet is committed to keeping you and your family safe – from the start of your journey to your destination. That's why every Chevrolet is designed with a comprehensive list of safety and security features to help give you peace of mind.

**GMMOBILITY.COM (1-800-323-9935)** GM Mobility<sup>SM</sup> offers financial assistance for eligible adaptive equipment to make automotive travel easier for persons with disabilities or special transportation needs. To learn more about special GM Mobility offers, visit [gmmobility.com](http://gmmobility.com).

**THE BUYPOWER CARD** The Chevrolet BuyPower Card – Every purchase you make with the BuyPower Card from Capital One\* helps you earn toward an eligible new Chevrolet, Buick, GMC or Cadillac vehicle. There's no limit on the amount you can earn or redeem, and your Earnings don't expire. Visit [chevroletbuypowercard.com/catalogs](http://chevroletbuypowercard.com/catalogs).

\* Capital One, N.A. is the issuer of the BuyPower Card. General Motors ("GM") is responsible for the operation and administration of the Earnings program.



TWITTER.COM/CHEVROLET



YOUTUBE.COM/CHEVROLET



FACEBOOK.COM/CHEVROLET

GM, the GM logo, Chevrolet, the Chevrolet logo, and the slogans, emblems, vehicle model names, vehicle body designs and other marks appearing in this catalog are the trademarks and/or service marks of General Motors, its subsidiaries, affiliates or licensors. ©2016 OnStar. All rights reserved. Sirius, XM, SiriusXM and all related marks and logos are trademarks of Sirius XM Radio Inc. The Bluetooth word mark is a registered trademark owned by Bluetooth SIG, Inc., and any use of such mark by Chevrolet is under license. Bose is a registered trademark of the Bose Corp. Google is a trademark of Google Inc. Michelin is a registered trademark of Michelin North America, Inc.

©2016 General Motors. All rights reserved. December 2016





**FIND *NEW* ROADS™**

**CHEVROLET.COM**