

# Lecture 7

Text figures from:

MD: Moore and Dalley, Clinically Oriented Anatomy 5th Edition  
2006 Lippincott Williams and Wilkins

G: Drake, Vogl and Mitchell, Gray's Anatomy for Medical Students  
2005 Elsevier

NP: Netter, Atlas of Human Anatomy 5 Edition,  
Elsevier, 2011

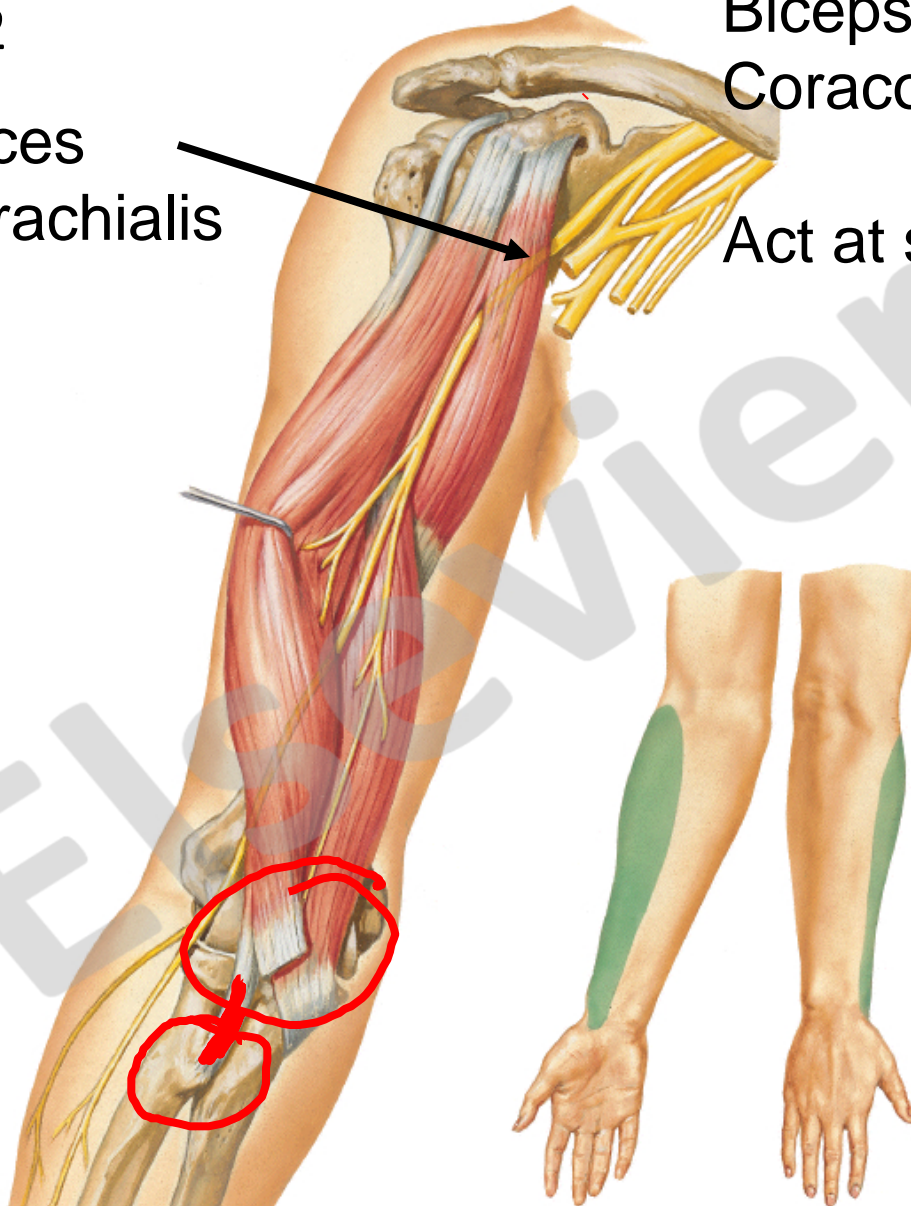
RM: White, USMLE Road Map Gross Anatomy 2nd Ed.  
McGraw-Hill

Musculocutaneous Nerve C5, C6 **anterior arm muscles:**  
Biceps brachii, Brachialis,  
Coracobrachialis

NP462

MC pierces  
coracobrachialis

Act at shoulder and elbow



## Median Nerve



C6- T1

NP463

All but 1 and 1/2

**Anterior forearm muscles,**  
Thumb (thenar muscles) and  
2 lumbricals in hand

Act at elbow, wrist, thumb  
and fingers

# Ulnar Nerve

C8, T1

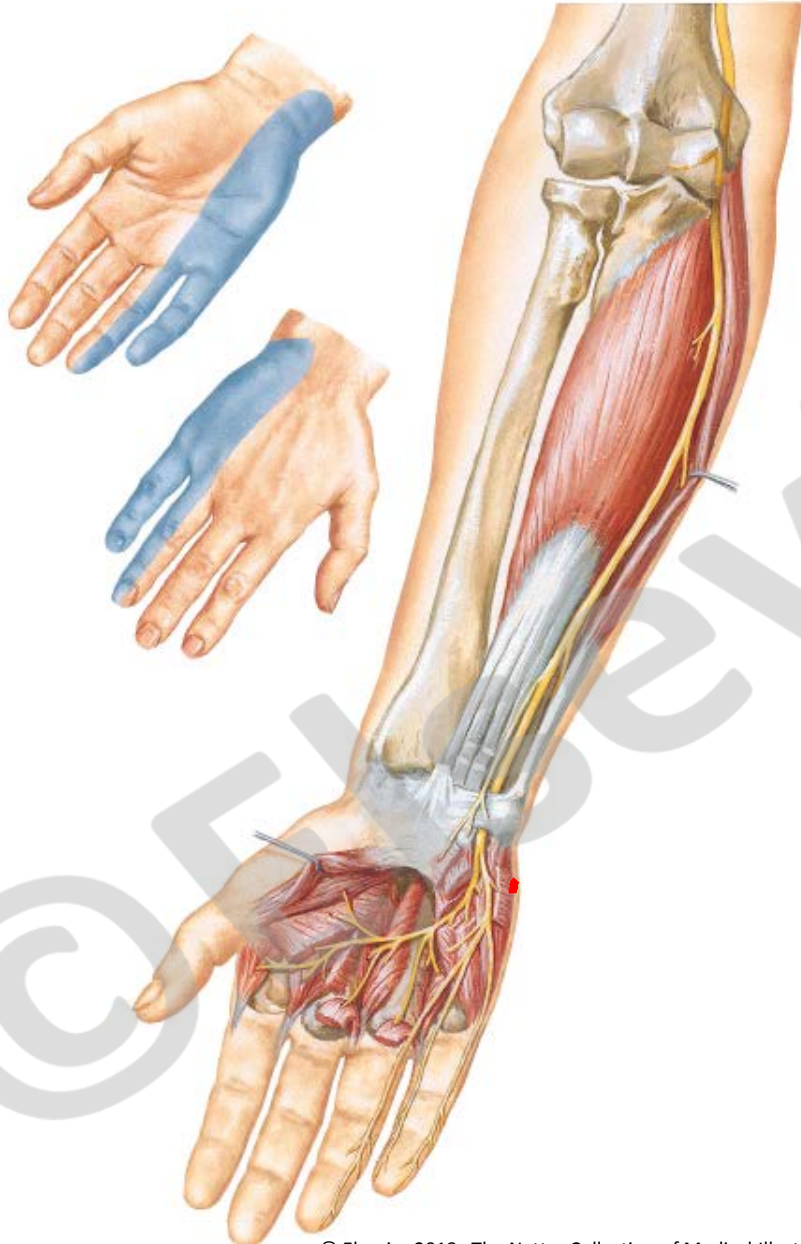
NP464

1 and 1/2 forearm muscles

All **intrinsic hand muscles**

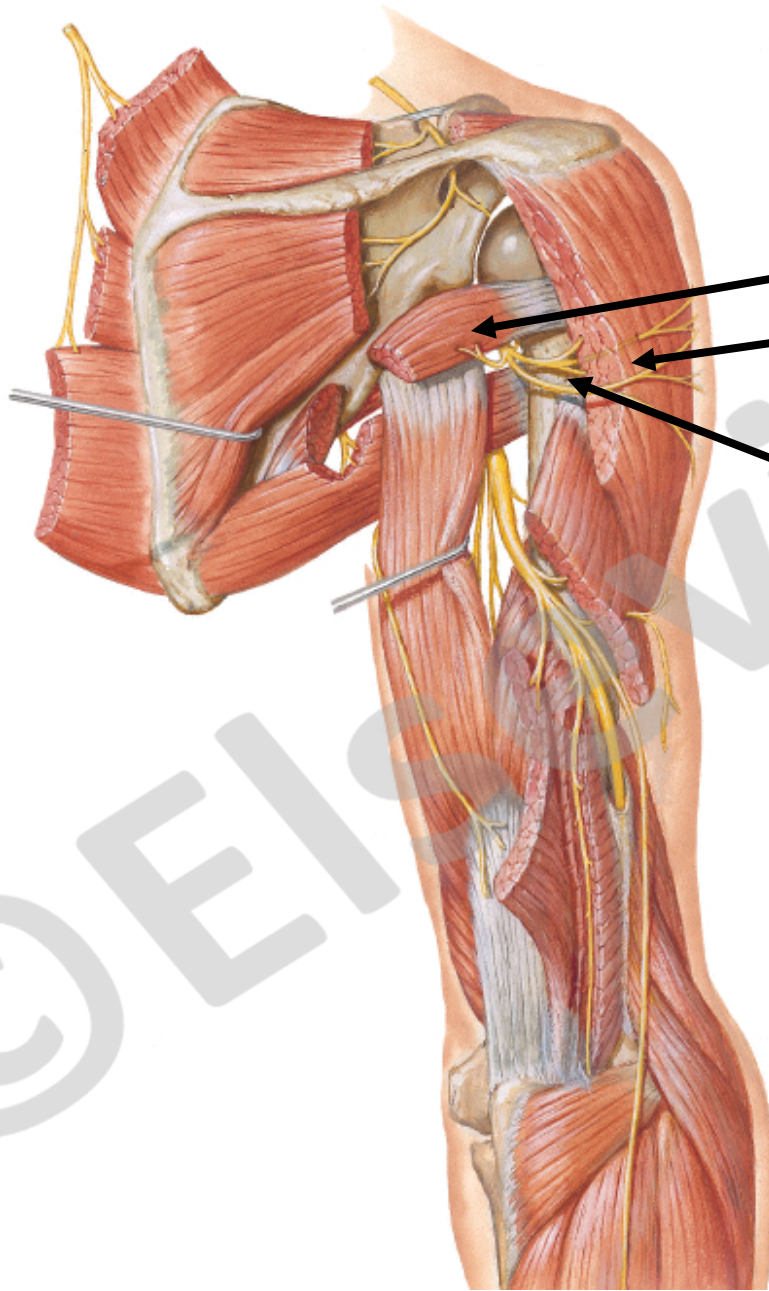
except those innervated  
by median nerve

Act mainly on thumb and fingers



# Scapular, Axillary, and Radial Nerves Above the Elbow

NP465



Innervates

Teres minor and  
Deltoid

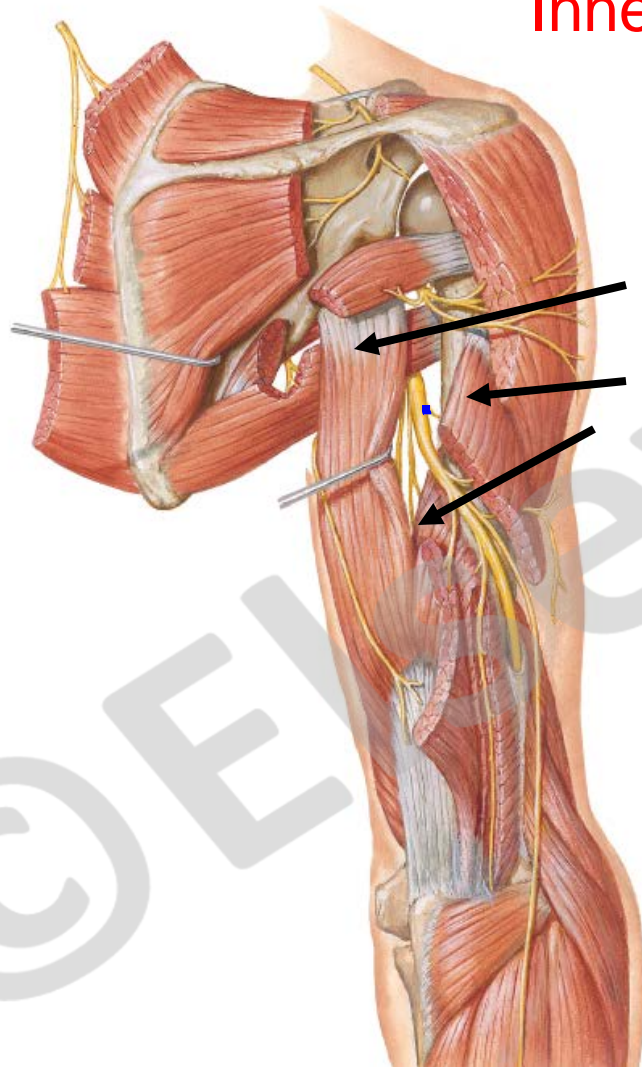
Axillary nerve C5, C6

Act only at shoulder

NP465

Scapular, Axillary, and Radial Nerves Above the Elbow

# Radial nerve C5,6,7,8



Innervates:

Triceps  
Long  
Lateral  
Medial  
Heads

Posterior  
Forearm  
muscles

Act at shoulder, elbow  
wrist, thumb and  
fingers

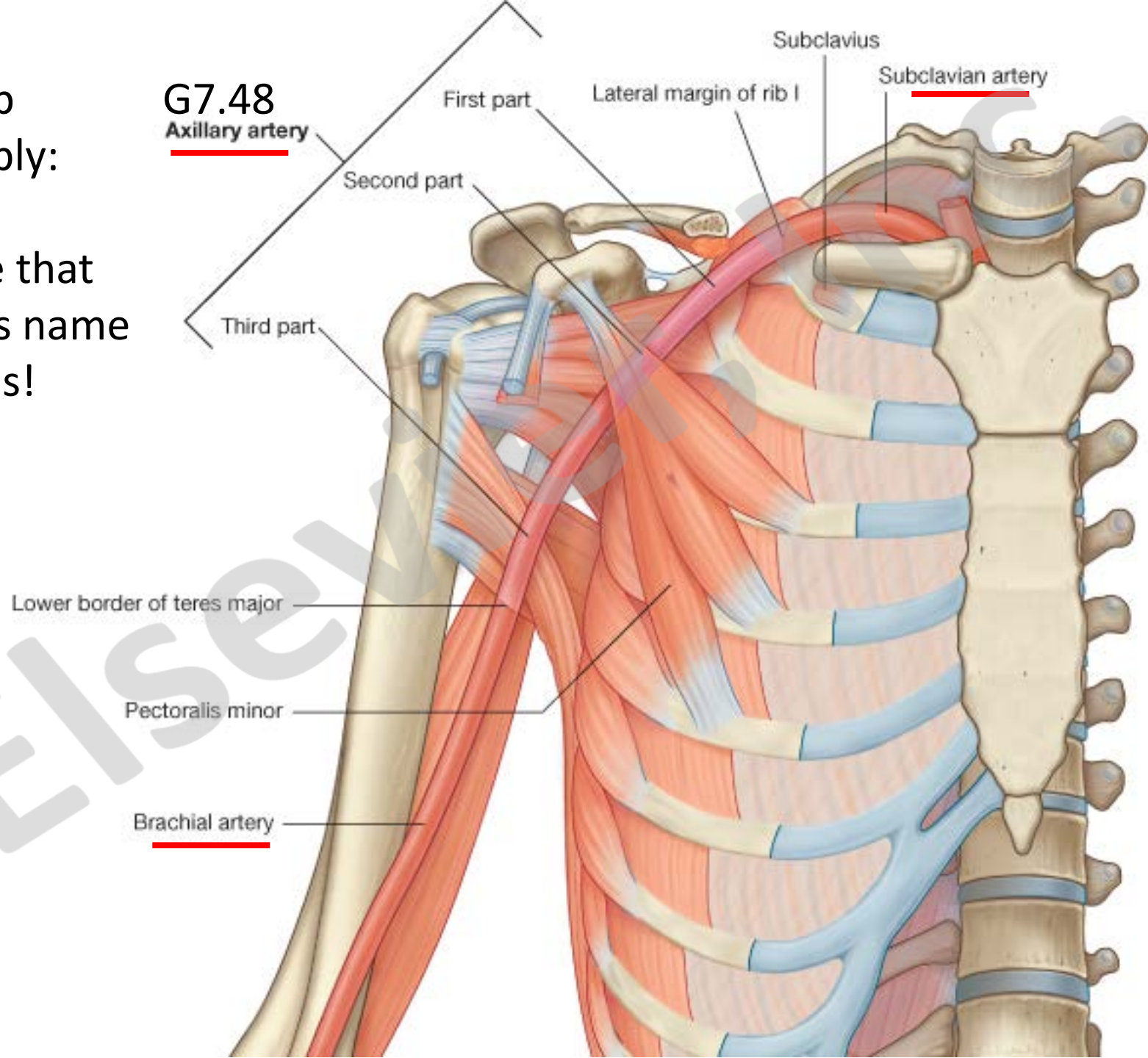
NP466

Radial Nerve in the Forearm



Upper limb  
Blood supply:

Same tube that  
changes its name  
three times!



Upper limb blood supply:

(The **subclavian** becomes the **axillary** where it crosses the outer edge of the first rib and the **axillary** becomes the **brachial** where it crosses the lower border of the teres major muscle.)

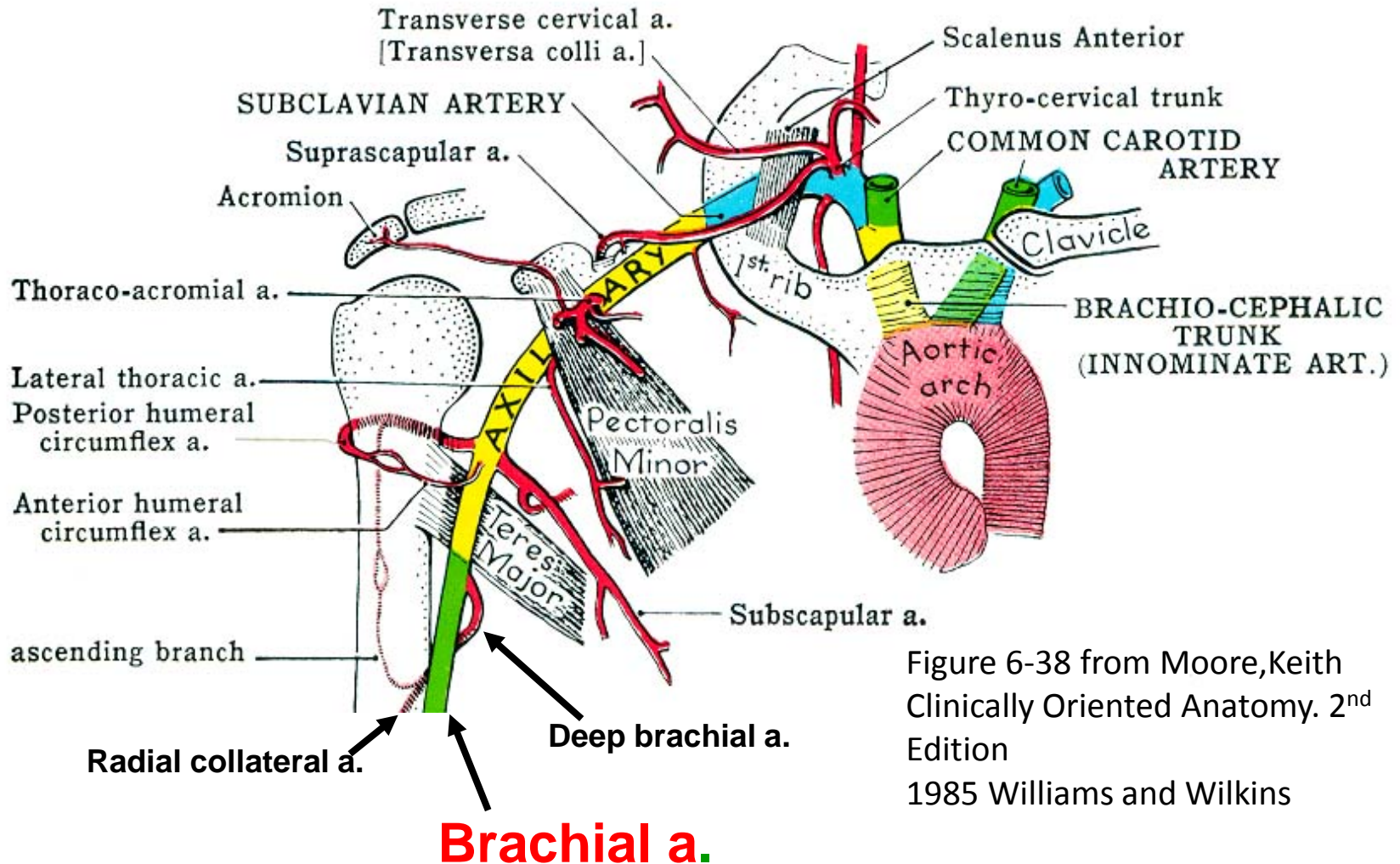
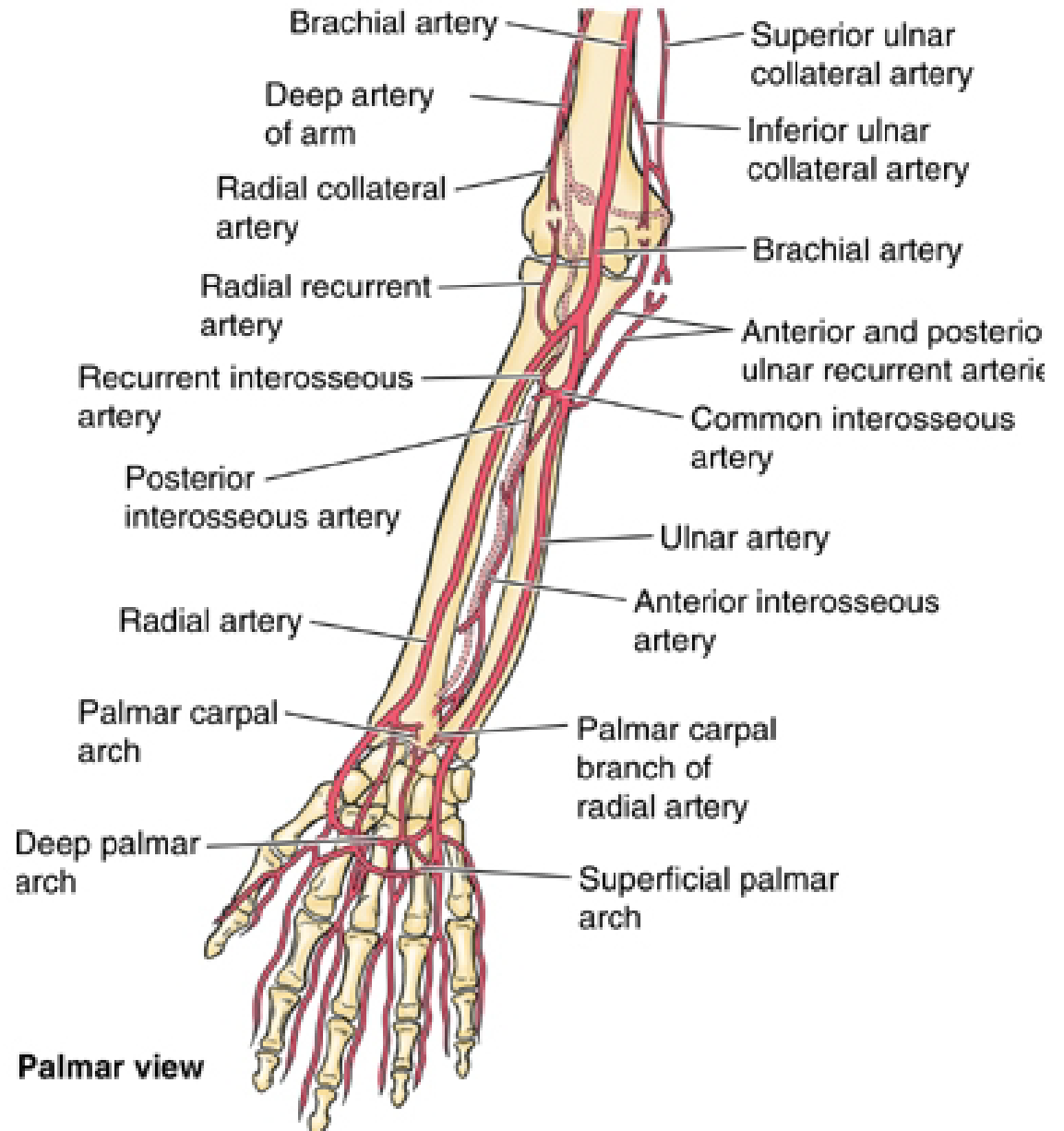


Figure 6-38 from Moore, Keith  
Clinically Oriented Anatomy. 2<sup>nd</sup>  
Edition  
1985 Williams and Wilkins

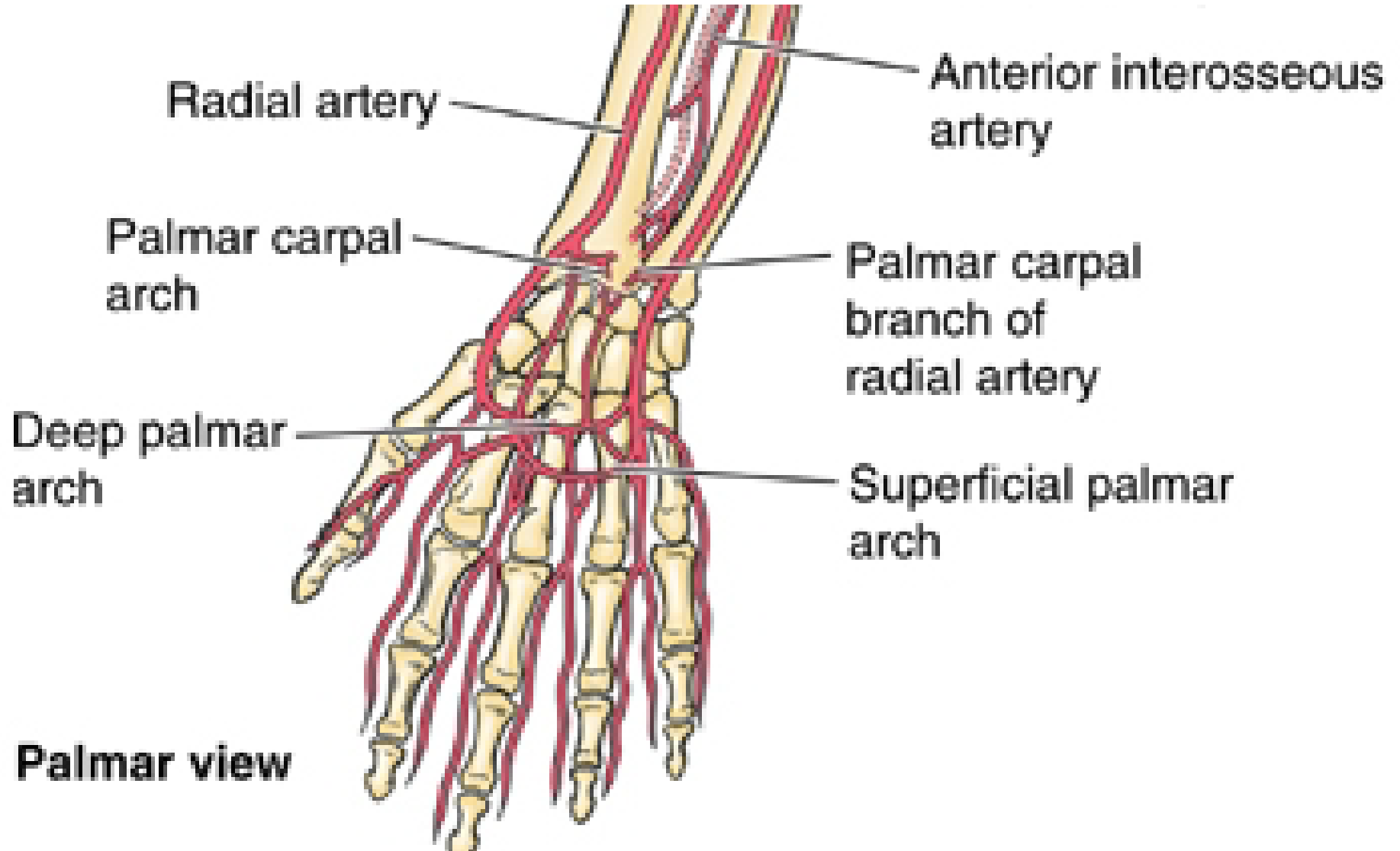


# MDT6.9



Radial pulse is determined by compressing radial artery against the radius

MDT6.9



MD7.79

Proper palmar digital arteries

Common palmar digital arteries

Superficial palmar arch

Deep palmar branch of ulnar artery

Ulnar artery

Radialis indicis artery

Princeps pollicis artery

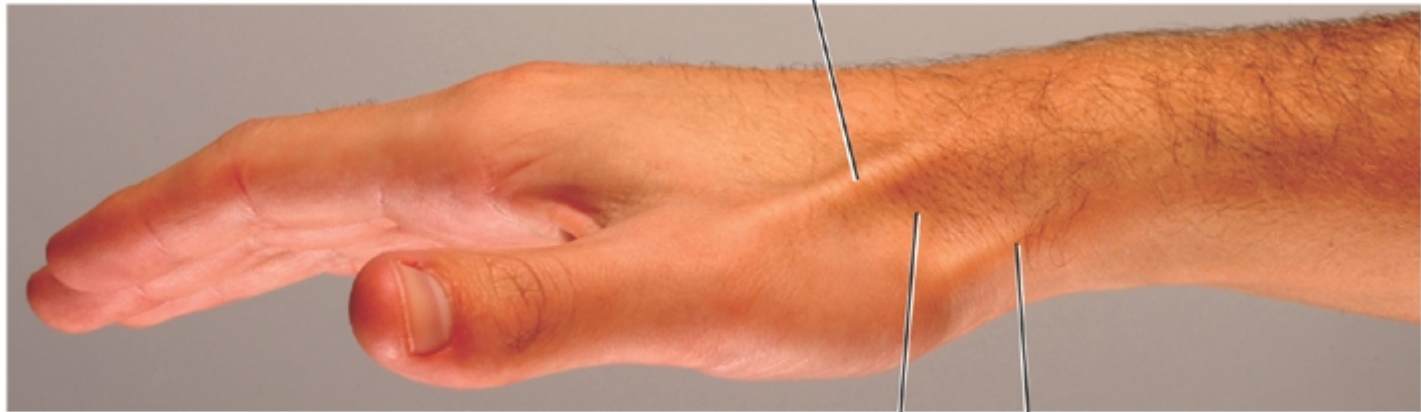
Palmar metacarpal arteries

Deep palmar arch

Radial artery



Extensor pollicis longus (EPL) tendon



MD  
6.44A  
6.44B

Medial view of pronated hand

Extensor pollicis brevis (EPB) tendon

Anatomical snuff box

COA5 ©2006 LWW

Extensor retinaculum

Styloid process of radius

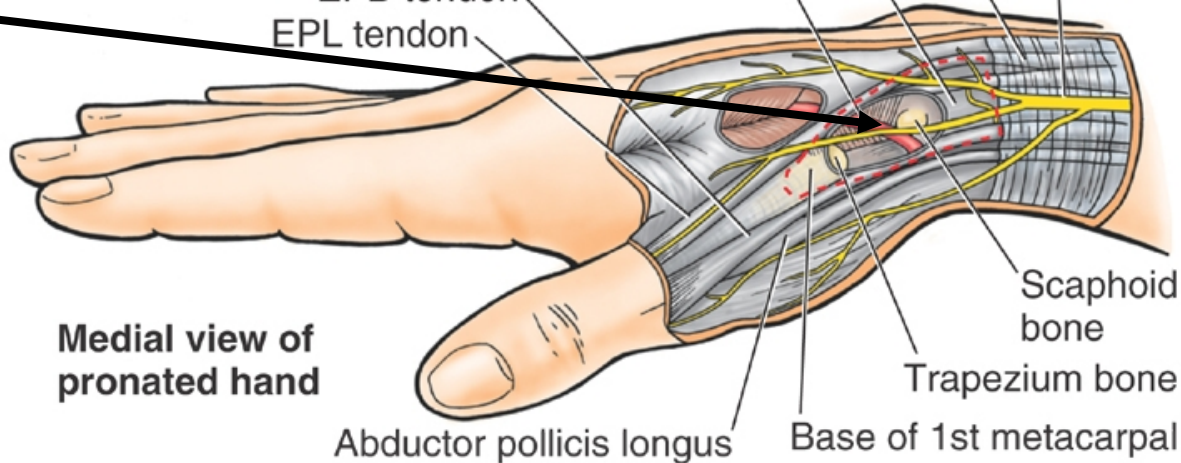
Superficial branch of radial nerve

Radial artery in anatomical snuff box

EPB tendon

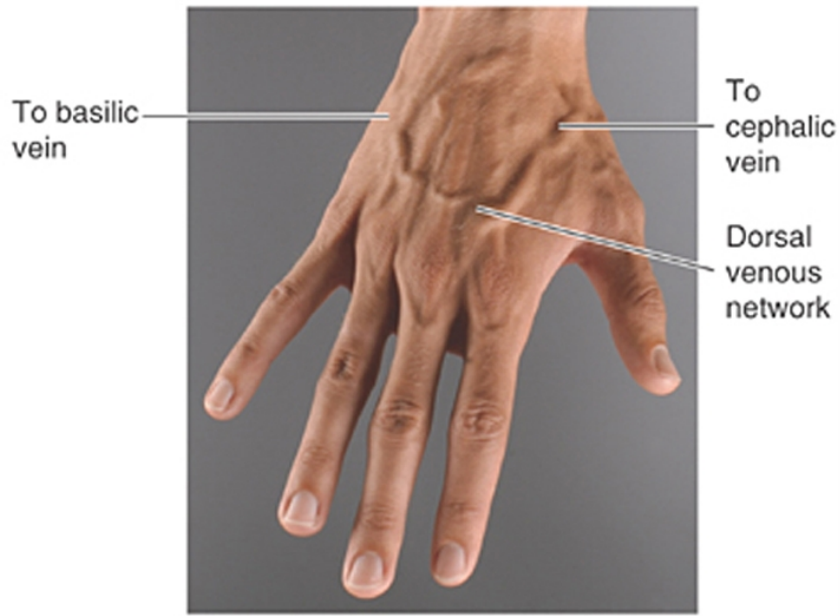
EPL tendon

Radial artery  
In snuffbox

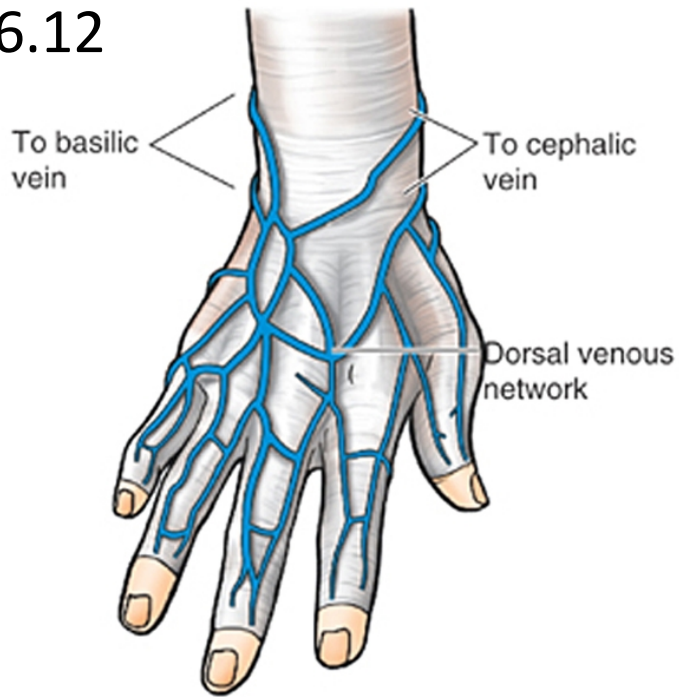


Medial view of pronated hand

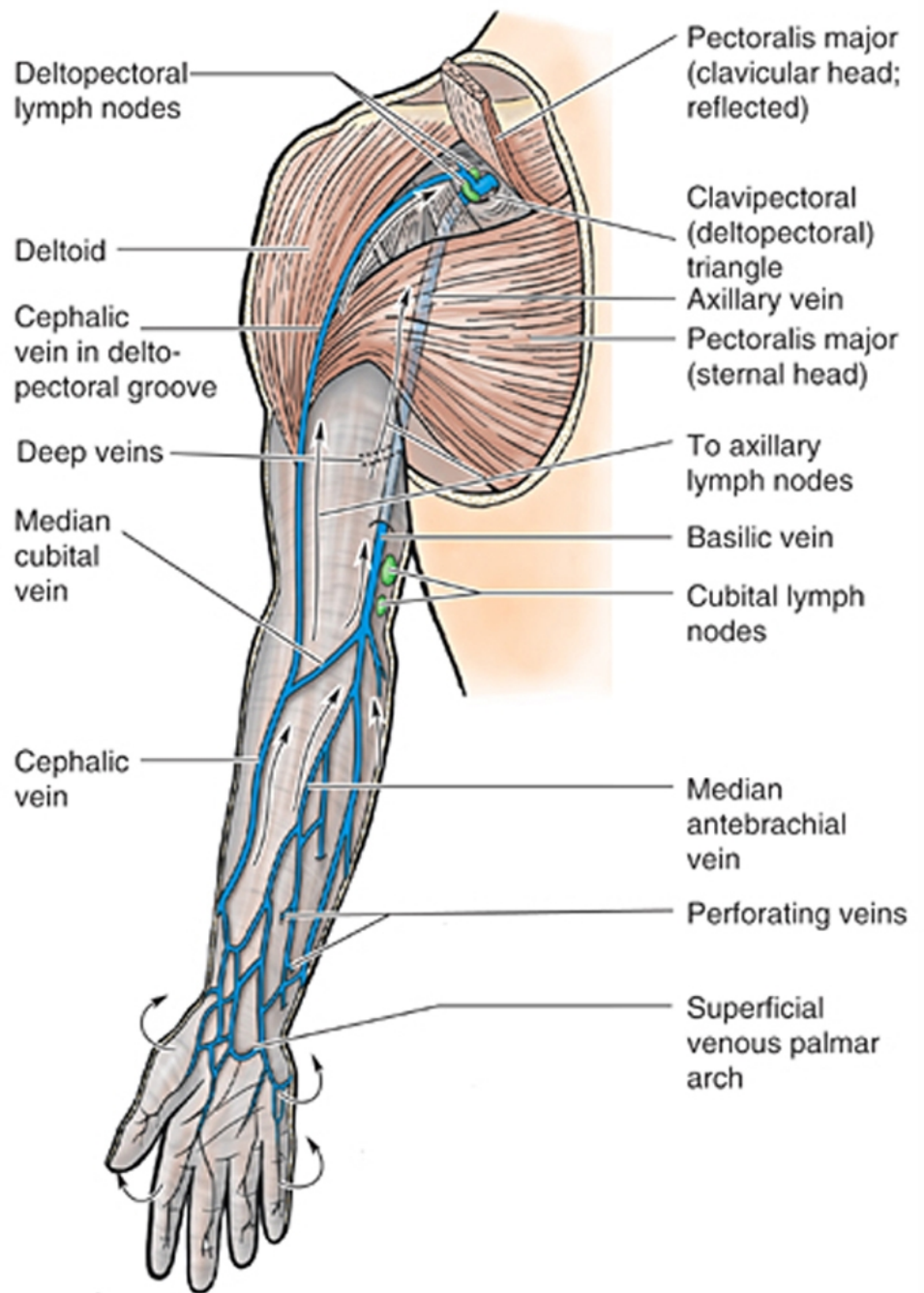
COA5 ©2006 LWW



## MD6.12



Posterior (dorsal) views



Anterior (palmar) views